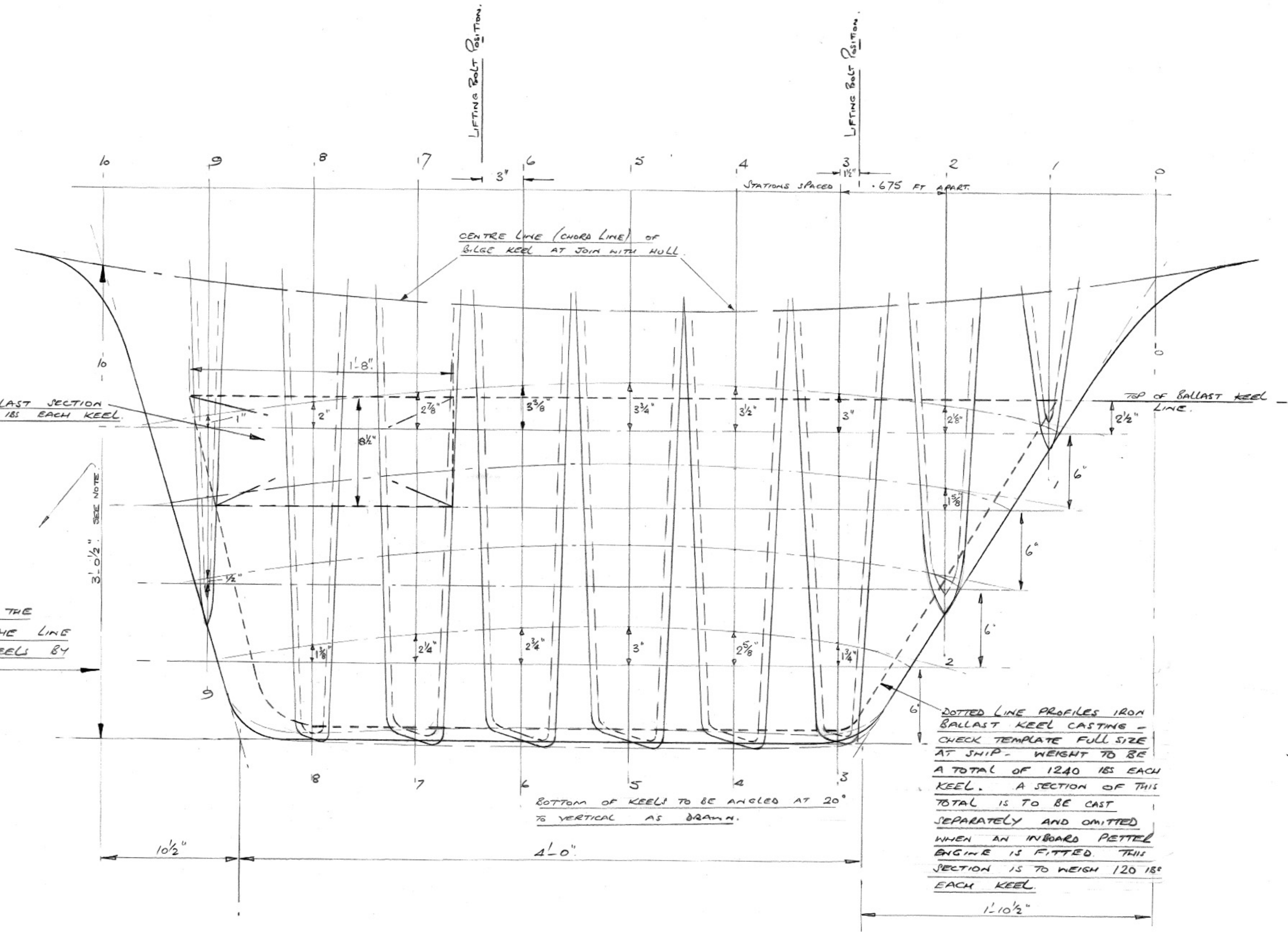
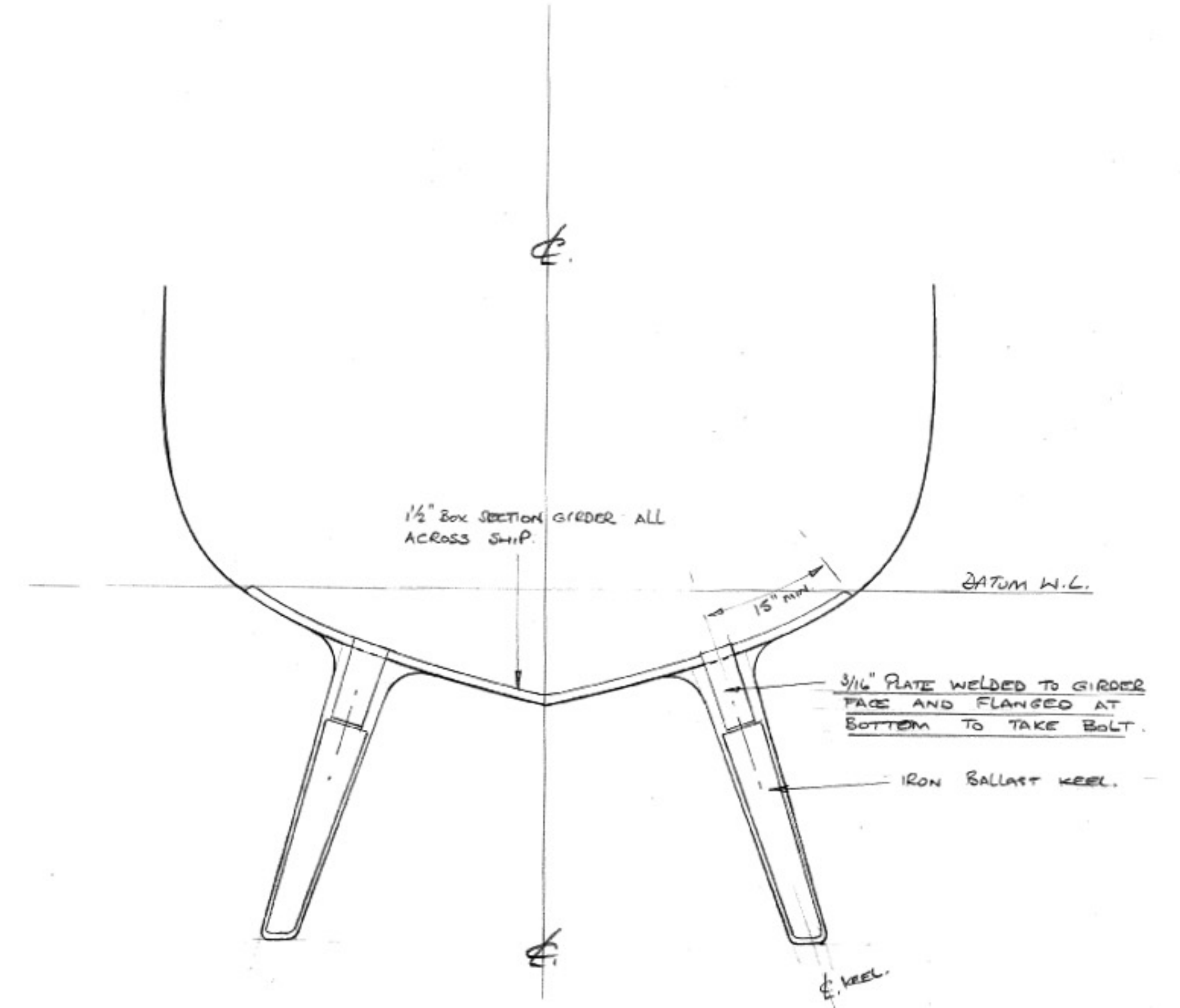
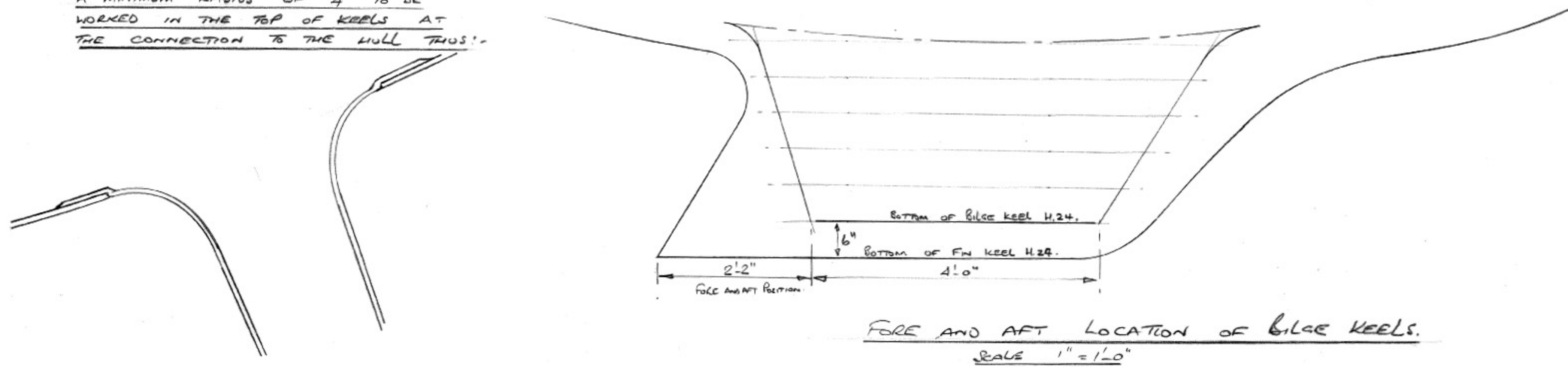


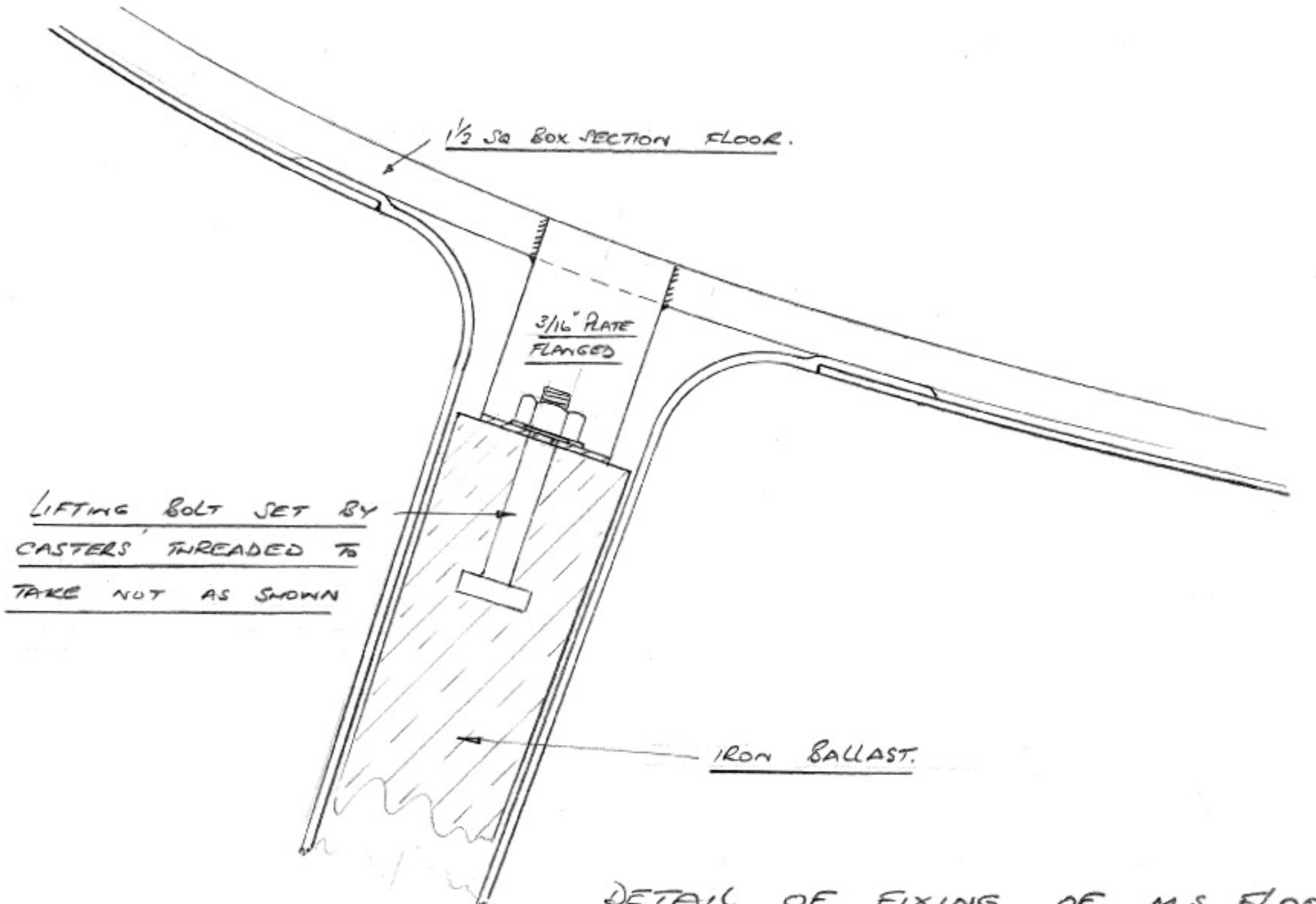
NOTE:-
CHECK CAREFULLY AT SHIP THAT THE
RUDDER SKEG IS CLEAR OF THE LINE
OF THE BOTTOM OF GILGE KEELS BY
AT LEAST 3"



NOTE:- IMPORTANT.
TRANSVERSE LOCATION OF KEELS TO BE AS EXISTING CRAFT BASICALLY BUT TO BE CHECKED AND APPROVED BY DESIGNER BEFORE ANALYZING KEEL TEMPLATES AT YACHT. A MINIMUM RADIUS OF 4" TO BE WORKED IN THE TOP OF KEELS AT THE CONNECTION TO THE HULL THUS:-



GENERAL ARRANGEMENT OF STEEL FLOORS TO SUPPORT BALLAST KEELS.
SCALE 1" = 1'0"



DETAIL OF FIXING OF M.S. FLOORS TO IRON BALLAST KEELS.
NOTE:- TWO FLOORS PER KEEL - SEE PROFILE AT LEFT FOR POSITIONS.
SCALE:- 3" = 1'0"

LURLEY 24 AUX SLOOP	
DATE:- 14. 1. 75.	GILGE KEEL DETAILS.
DRG NO H.24/8.	
SCALE - AS MARKED.	
IAN C. ANDERSON R.A.N.A. NAVAL ARCHITECT. 7 LURLEY RD. DARTMOUTH DEVON.	