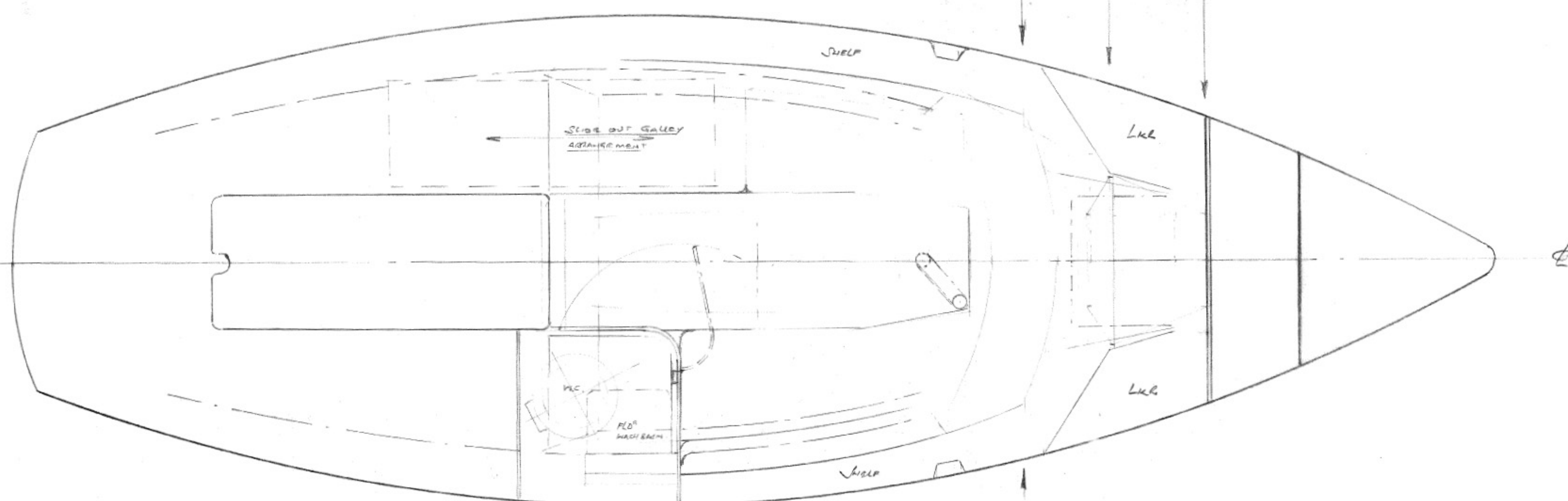
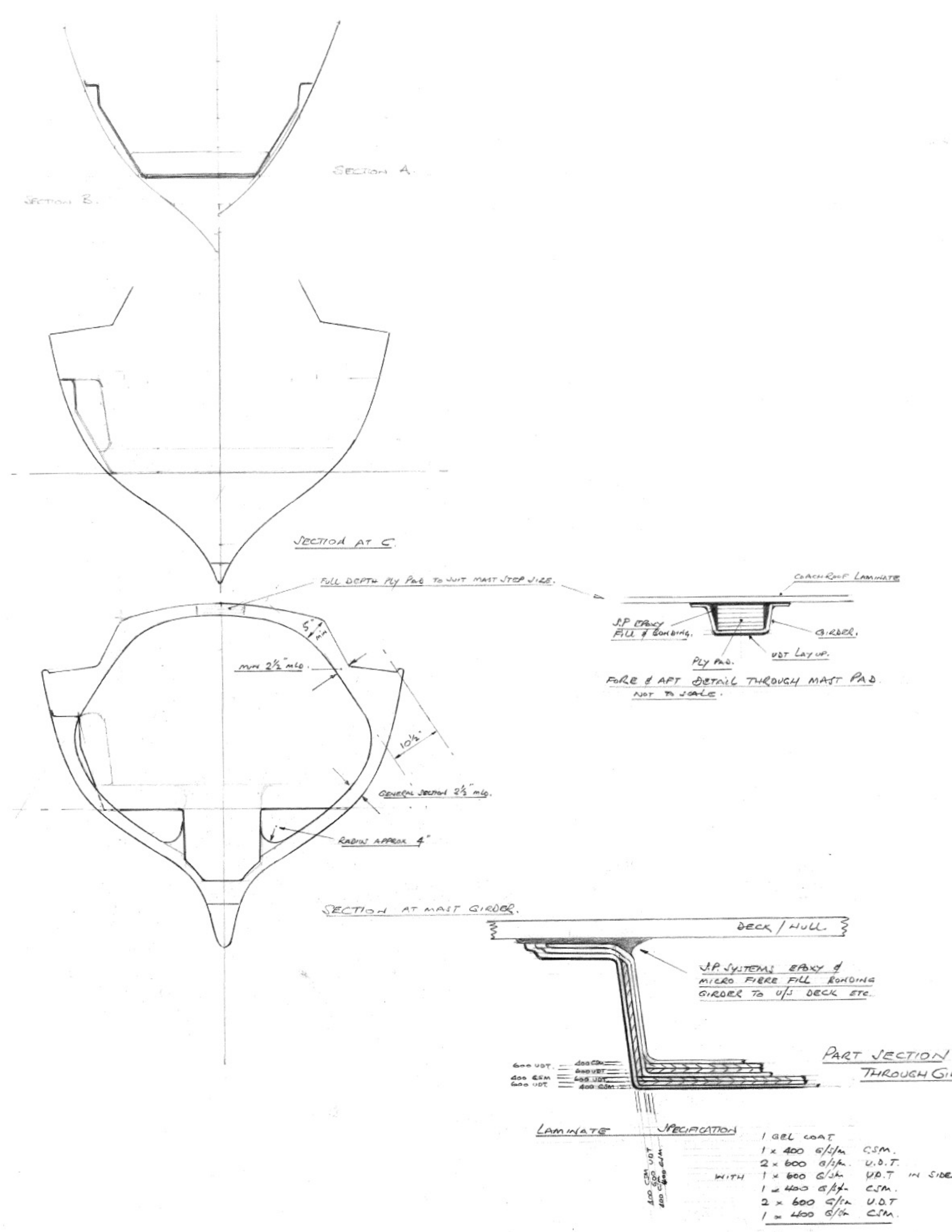


SECTION A-A



VOYAGING & BACKLASH ARRANGEMENTS TO BE PROVIDED AT SWEEP.

HURLEY 22 1989 OPEN PLAN VERSION.

**A**

**IAN L ANDERSON M.R.I.N.A.**  
NAVAL ARCHITECTS  
SAIL - POWER - COMMERCIAL  
7 Hauley Road Dartmouth  
Devon England 08043 2137

**COPYRIGHT**  
This design is the property of Ian L. Anderson M.R.I.N.A. and must be regarded as strictly confidential. It is not to be copied, issued to a Third Party or used for production purposes without this designers permission.

SCALE: 1" = 1'-0" DATE: 1<sup>st</sup> FEB 89 DRAWN: I.L.A. DRG No: H 22. 1989/1